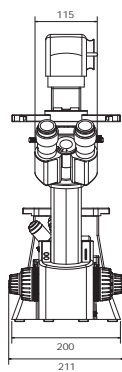
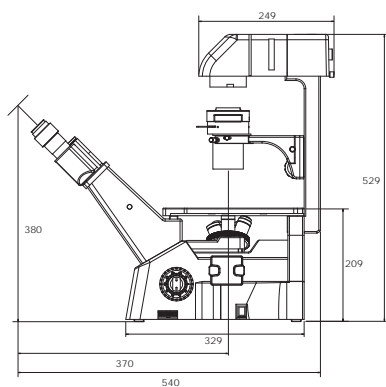


SPECIFICATIONS

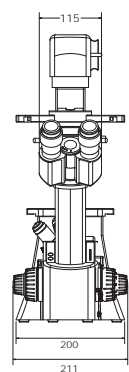
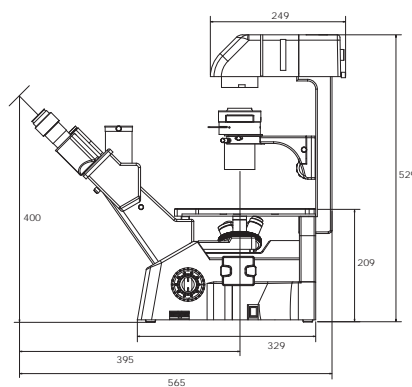
MODEL		AE30 Binocular	AE31 Trinocular
Optical System		Colour Corrected Infinity Optical System [CCIS®]	
Observation Tube		Siedentopf Widefield Binocular 45° [F.N. 22]	Siedentopf Widefield Trinocular 45° [F.N. 22] - light distribution 20/80 Siedentopf Widefield Trinocular 45° [F.N. 22] - light distribution 0/100
Viewing Height		380mm	400mm
Nosepiece		Quintuple, left-handed tilt	
Stage	Fixed stage	Stage size: 200x260mm, Stage Height: 207mm, Auxiliary stages available	
	Mechanical	Universal attachable mechanical stage with well plate holders, Ø35mm, Ø54mm, and Ø65mm petri dish holders, Haemocytometer holder	
Condenser		ELWD N.A. 0.30 (W.D. 72mm) slider stop, focusable; LWD N.A. 0.50 (W.D. 28mm) slider stop, focusable for objectives 4X to 40X	
Slider		Centrable phase slider [PH 1, PH 3, 1 empty position]	
Illumination	Source	6V/30W Quartz Halogen externally mounted and centrable lamp; built-in heat absorbing filters with removable diffuser	
	Aperture	Lever mechanism Ø0.2mm - Ø30mm	
	Filter holder	Built into condenser for Ø45mm Blue, Ground Glass, and Green Interference filters	
Focus		Z-axis movement via nosepiece with 10mm stroke movement; 1µm minimum increment; silicon coated	
Eyepieces		WF PL 10X/22mm focusable; WF PL 10X/22mm with cross hair; WF PL 12.5X/17.5mm focusable; WF PL 15X/14.5mm focusable	
Objectives		CCIS® Plan Achromat Inverted; CCIS® Plan Achromat LWD Inverted; CCIS® Plan Achromat Phase Inverted; CCIS® Plan Achromat Phase LWD Inverted	
Epi-Fluorescence Attachment		3-cassette slider; HBO 100W centrable lamp housing; heat absorbing filter; light shield plate	
Documentation	Photomicrography	2.5X SLR Projection Lens, 2.5X and 4X photo eyepiece	
	Digital/Video	0.5X c-mount camera adapter [1/2" chip sensor]0.65X c-mount camera adapter [2/3" chip sensor]1.0X c-mount camera adapter [no lens]	
Power Consumption		Universal power supply 100-240V, 50/60Hz, 35W	
Weight		11.4Kgs	

SCHEMATIC DIAGRAMS

AE30 Binocular



AE31 Trinocular



UNIT : MM