

## Update Instructions

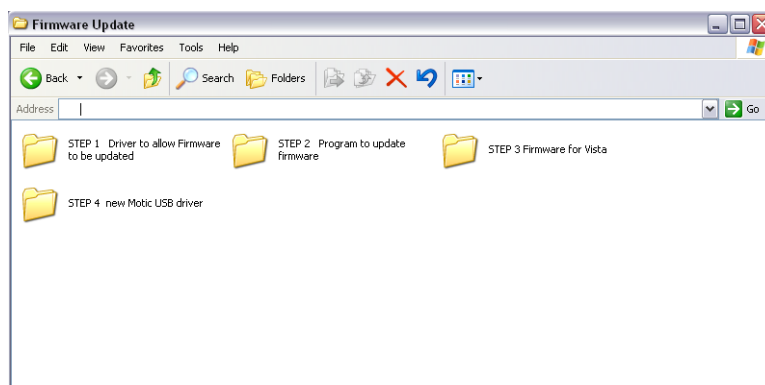
For Motic Imaging Devices to work on  
Microsoft Vista

### NOTE:

You are using this update at your own risk. We shall not be responsible for any errors, problems or faults arising either directly or indirectly from the use of this guide

Please also ensure that you have an upgradeable Imaging Device. Performing this Update on the wrong device will render it useless.

Please download the ZIP file and copy the contents onto your harddisk. Also please get your imaging device ready.



### STEP 1:

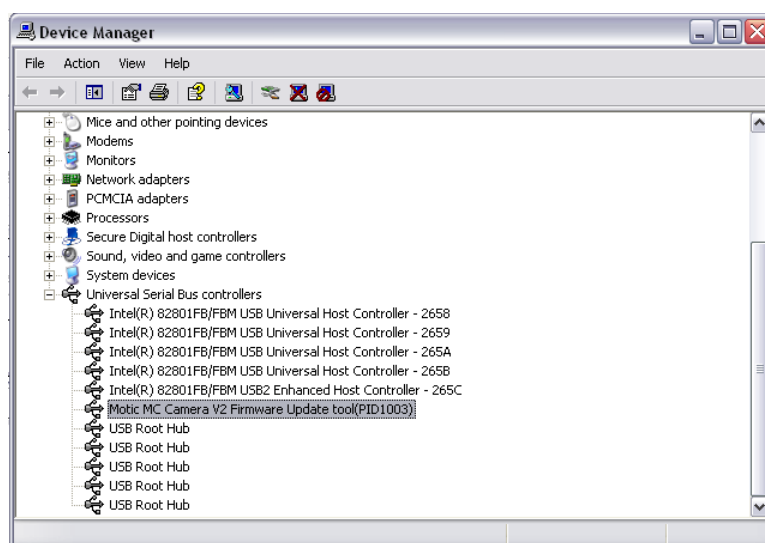
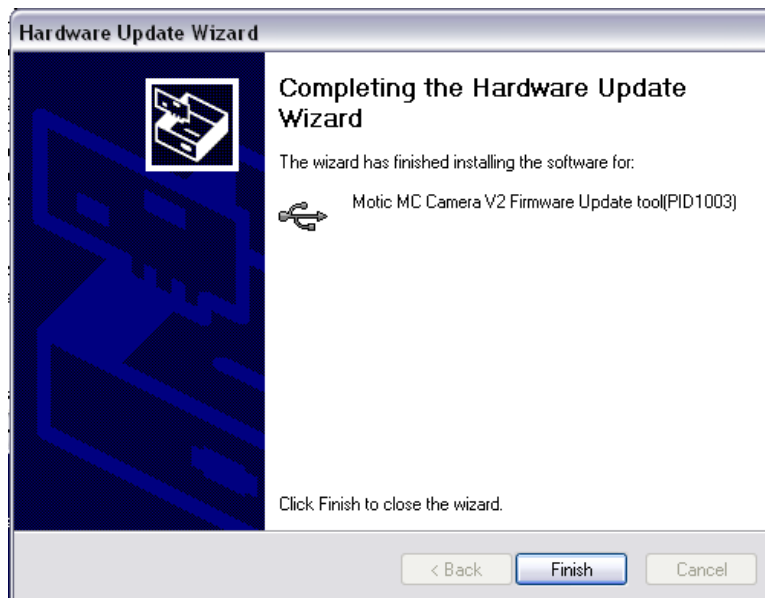
Please connect your imaging device to your computer and make sure that the original driver is installed.

Then go to your computer's Device Manager, and right-click on the **MC Camera V3** driver in Imaging Devices.

Click on Update Driver and select **EZTest.inf**, which is located in the **STEP 1** Folder of the package you downloaded.

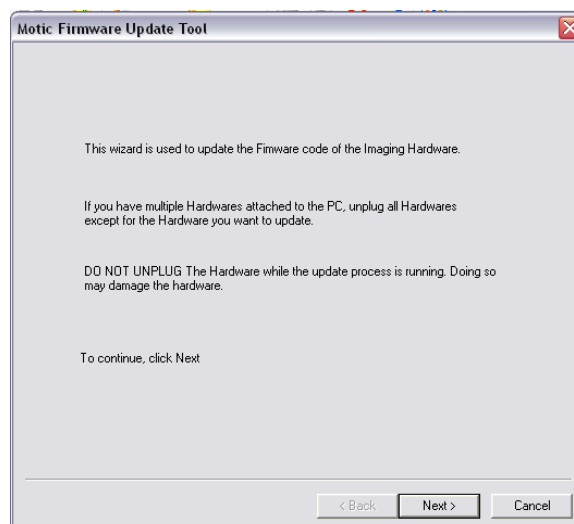
At the Microsoft Signature message, please click on "Continue Anyway" or "Install Anyway".

In the computer's Device Manager, you should no longer be able to see your MC Camera V3, but you should see the following Motic MC Camera V2 Firmware Update Tool (PID1003)



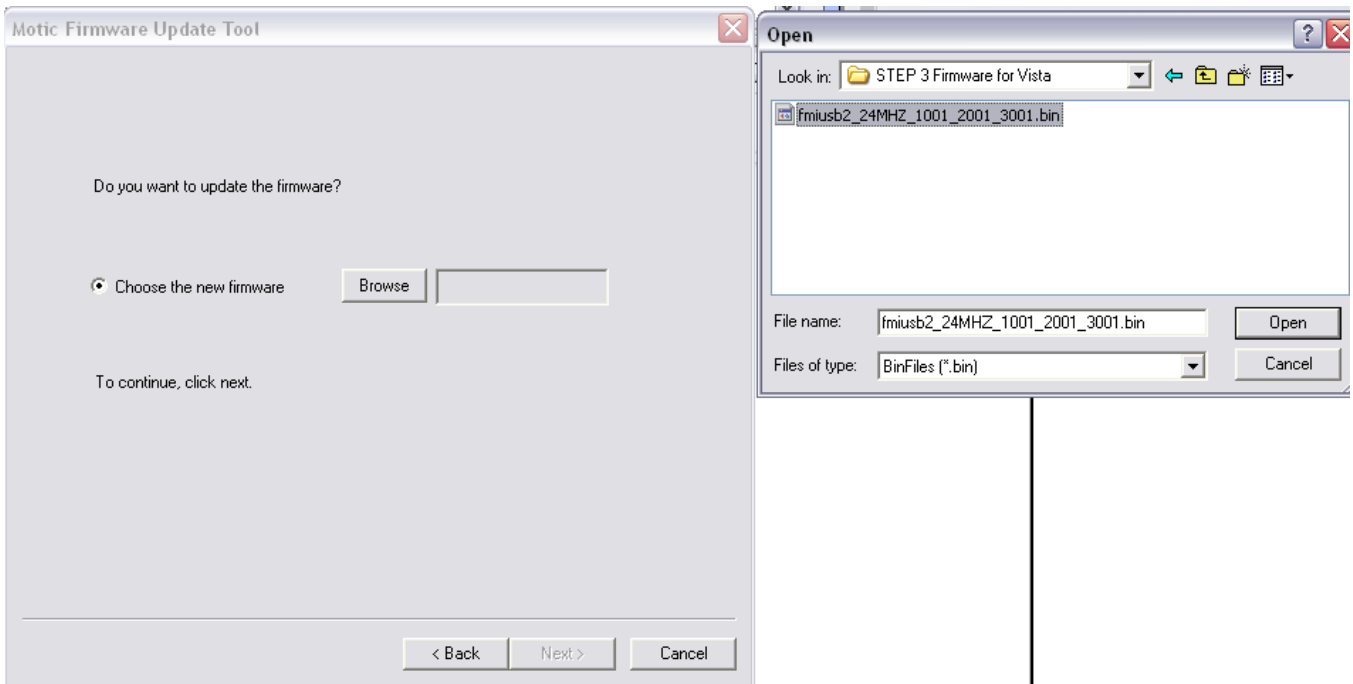
## STEP 2:

Now that your computer recognizes the camera as a device that can be updated, please launch the **Update2.exe** program which is in the **Step 2** folder. Follow the on-screen instructions.



### STEP 3:

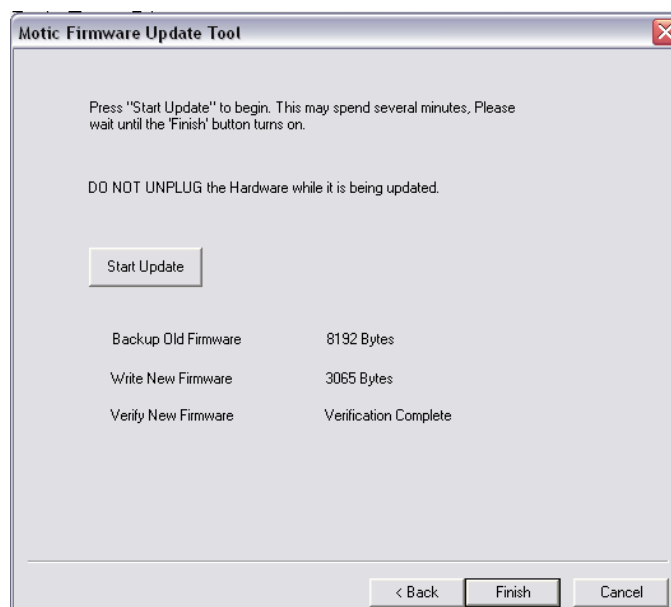
When you click on NEXT in the previous screenshot, then you will be asked to choose a new firmware (BIN) file. This file can be found in the **STEP 3** folder.



When you click on NEXT in the previous screenshot, then you will be asked to choose a new firmware (BIN) file. This file can be found in the **STEP 3** folder. Click on **NEXT** and then **START UPDATE**.

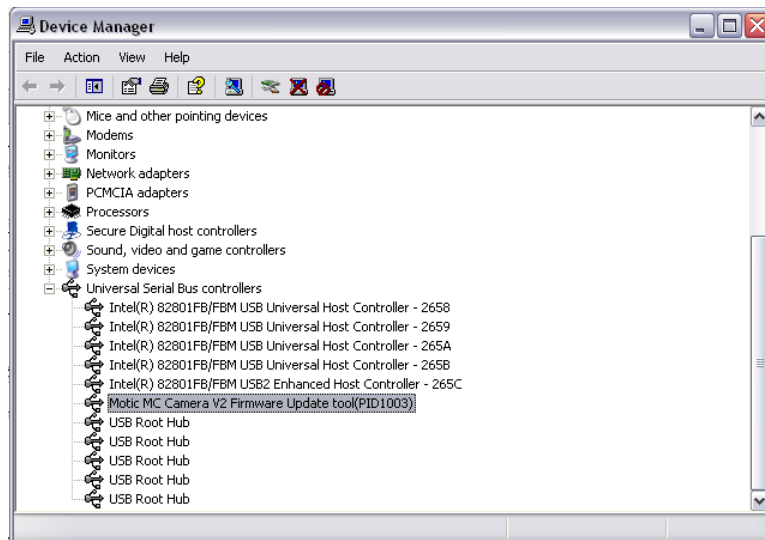
**This process will take up to 2 minutes, DO NOT UNPLUG THE CAMERA or close the program.**

When it is finished, you will see the following screen:

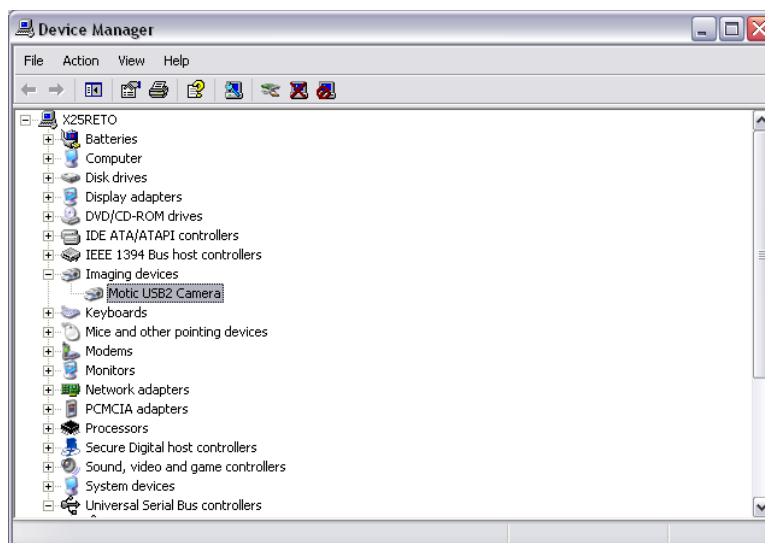


#### STEP 4:

Now that you have updated the Firmware, your Imaging Device is ready to work with the new Vista Driver that can be found in the **STEP 4** folder. Go back to your Device Manager and right click on the Firmware Update driver and click on "Update Driver".



Select **MoticUSBCamera.inf** from the STEP 4 folder and let it load. Again, if there is any Windows Signature message, click on Install Anyway or Continue Anyway.



**Congratulations, you have now successfully updated your Imaging Device to run with Vista.**  
**Please remember to Download the updated Motic Images Plus 2.0ML and read the Quick Start Guide for the new enhanced camera interface.**